

Pressione di lavoro: 10 bar
Filetti cilindrici: UNI-ISO 228/1 G
Filetti conici: UNI-ISO 7/1 R
Filetti metrici: ISO R/262M

Working pressure: 10 bar
Parallel Threads: BSP
Taper Threads: BSPT
Metric Threads: ISO R/262M

Legenda per la composizione delle sigle e varianti standard di silenziatori e regolatori di scarico silenzianti

How to compose standard descriptions and options of silencers and silenced exhaust speed regulators

Famiglia / Family

S = Silenziatori / Silencers
R = Regolatori / Regulators

Materiale (Variante)
 Material (Option)

X = Inox / Stainless steel
P = Nylon / Nylon

Filettatura (Variante)
 Thread (Option)

N = NPT
M = Metrica / Metric
F = Femmina / Female

Filetto metrico (variante M)
 indicare filetto - es: M10x1

Metric thread (Option M)
 indicate thread - ex: M10x1

Articolo / Item
 da **01** a **22**
 from **01** to **22**

N = Nichelato / Nickel-plated
S = Speciale / Special

Misure filetti (standard BSP)
 Thread sizes (standard BSP)

M5 = M5

18 = 1/8

14 = 1/4

38 = 3/8

12 = 1/2

34 = 3/4

01 = 1

41 = 1-1/4

21 = 1-1/2

02 = 2

22 = 2-1/2

03 = 3

04 = 4

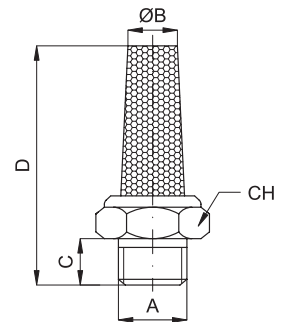
06 = 6

Per i codici ed articoli standard vedi tabelle delle pagine seguenti
 For standard codes and items see tables on following pages

SX03 Nipplo: AISI 316 Parte filtrante: AISI 316
 Nipple: AISI 316 Filter: AISI 316



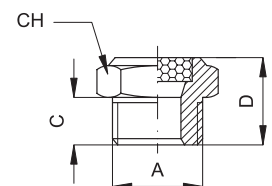
INOX Stainless steel	Codice Code	Articolo Article	A	B	CH	C	D	Confezione Order Q.ty
	10022	SX03M5	M5	4	9	5	21,5	50
	10023	SX0318	1/8"	8,5	12	7	28,5	50
	10024	SX0314	1/4"	10,5	15	9	33	50
	10025	SX0338	3/8"	12	19	9	40	25
	10026	SX0312	1/2"	16	23	9,5	48	20
	10027	SX0334	3/4"	22	30	11	58,5	10
	10028	SX0301	1"	27	36	15	71	5



SX07 Nipplo: AISI 316 Parte filtrante: AISI 316
 Nipple: AISI 316 Filter: AISI 316



INOX Stainless steel	Codice Code	Articolo Article	A	CH	C	D	Confezione Order Q.ty
	10192	SX07M5	M5	8	5	10	50
	10193	SX0718	1/8"	12	7	14	50
	10194	SX0714	1/4"	15	9	16	50
	10195	SX0738	3/8"	19	9	16	25
	10196	SX0712	1/2"	23	9,5	19	20
	10197	SX0734	3/4"	30	11	21	10
	10198	SX0701	1"	36	15	26	5

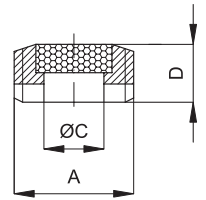


1



SX08 Nipplo: AISI 304 Parte filtrante: AISI 304
 Nipple: AISI 304 Filter: AISI 304

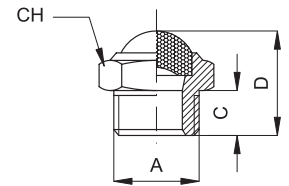
INOX Stainless steel	Codice Code	Articolo Article	A	C	D	Confezione Order Q.ty
	10061	SX0818	1/8"	6	4,5	100
10062	SX0814	1/4"	8	6,5	50	



SX11 Nipplo: AISI 304 Parte filtrante: Rete acciaio inox AISI 304
 Nipple: AISI 304 Filter: Net in stainless steel AISI 304



INOX Stainless steel	Codice Code	Articolo Article	A	CH	C	D	Confezione Order Q.ty
	10086	SX11M5	M5	8	4	8	100
10087	SX1118	1/8"	13	6	15	50	
10088	SX1114	1/4"	16	8	18	50	
10089	SX1138	3/8"	19	8	19	25	
10090	SX1112	1/2"	24	9	22	20	
10091	SX1134	3/4"	30	10	25	10	
10092	SX1101	1"	36	12	30	5	

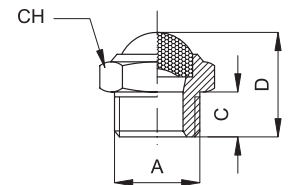


Su richiesta fornibili nella versione in AISI 316L - On request available in AISI 316L

SXN11 Nipplo: AISI 304 Parte filtrante: Rete acciaio inox AISI 304
 Nipple: AISI 304 Filter: Net in stainless steel AISI 304



INOX Stainless steel	Codice Code	Articolo Article	A	B	CH	C	D	Confezione Order Q.ty
	10240	SXN1118	1/8NPT	11	13	7,5	16,5	50
10181	SXN1114	1/4NPT	14	16	10	20,5	50	
10241	SXN1138	3/8NPT	17	19	11	22	25	
10242	SXN1112	1/2NPT	22	24	13	26	20	
10299	SXN1134	3/4NPT	28	30	15	30	10	
10300	SXN1101	1NPT	34	36	19	37	5	



Su richiesta fornibili nella versione in AISI 316L - On request available in AISI 316L