

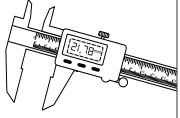
Accessori

Accessories

Accessori

Accessories

Dati tecnici
Technical data



pag. 7.1

Filtro riduttore
Filter regulator



pag. 7.1

Silenziatori
Silencers

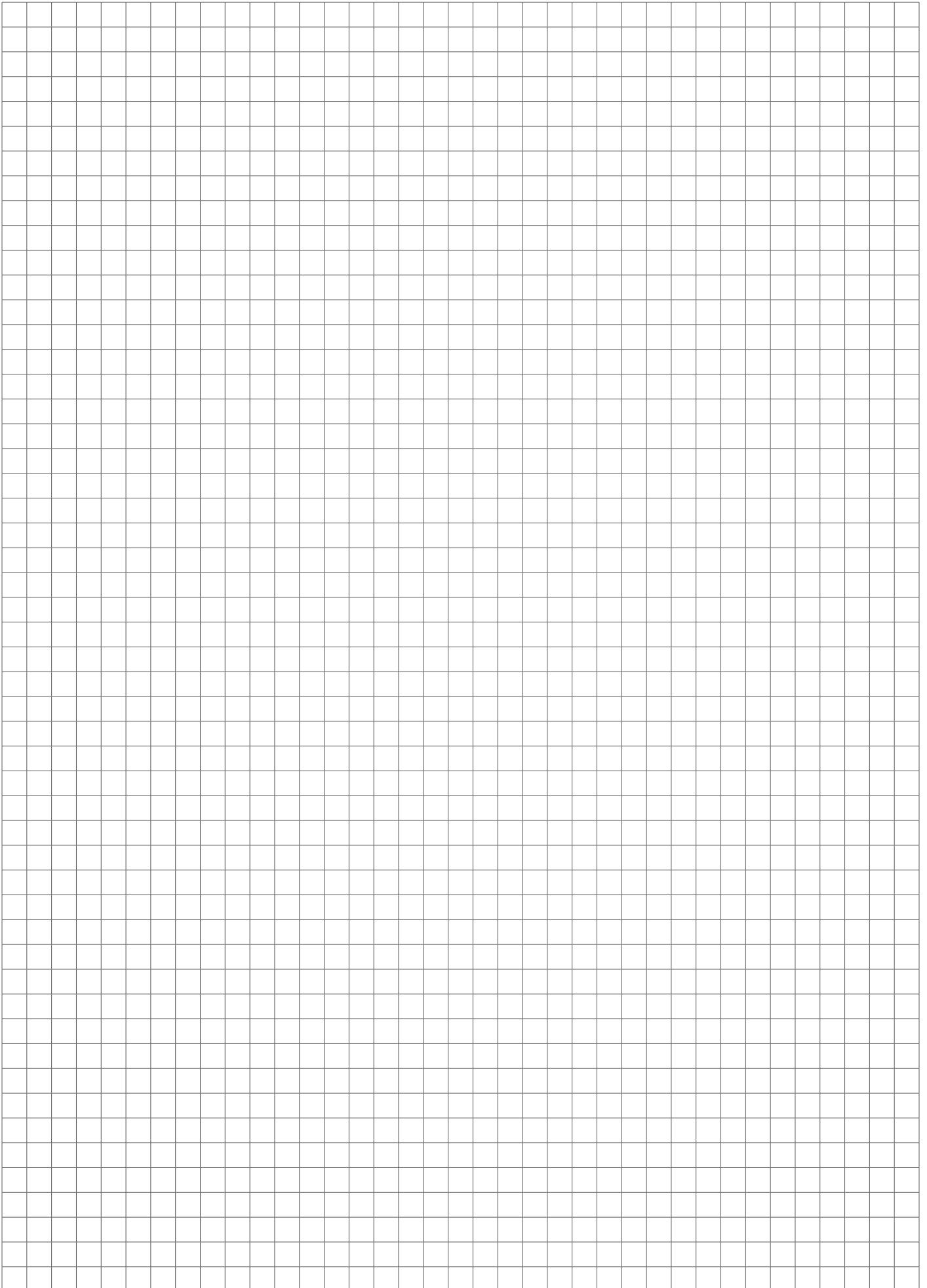


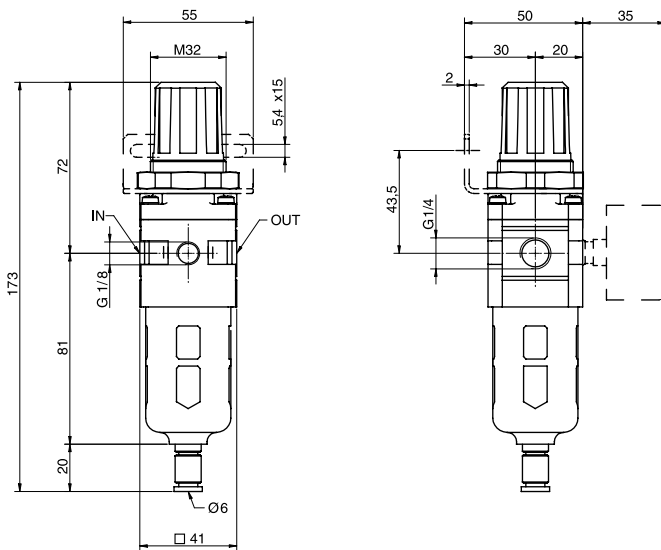
pag. 7.5

Raccordi
Fittings



pag. 7.5



Filtro riduttore - Filter regulator


Versione/Version	Filtro-riduttore Filter-regulator
Simbolo/Symbol	

Filtro riduttore avente le seguenti caratteristiche:

- Riduttore con valvole di scarico (relieving).
- Filtro con cartuccia standard 25 μ .
- Scarico condensa semi-automatico
- Tazza con protezione

Filter regulator having the following standard features :

- Regulator with relieving valve
- Filter standard with 25 μ cartridge
- Semi-automatic condense drain
- Cup with protection

Codice Code	80031	
Articolo Article	14FRR	
Fluido Fluid	Aria compressa / Compressed air	
Pressione massima Maximum pressure	10 bar	
Campo di regolazione Regulation range	0,5 ÷ 8,5 bar (~ 7,25 ÷ 123.25 psi)	
Portata a 6 bar (NI/min) Flow at 6 bar (NI/min)	14FRR = 750	
Temperatura Temperature range	0 ÷ +60°C	
Lubrificante consigliato Suggested oil	Con viscosità ISO VG 32 a norme ISO 3448 With ISO VG 32 viscosity conforming to ISO 3448 standards	
Capacità tazza Cup capacity	Filtro : 15 cm ³ Lubrificatore : 25 cm ³ Filter : 15 cm ³ Lubricator : 25 cm ³	
Elemento filtrante Filtering element	Standard 25 μ - A richiesta 5 μ Standard 25 μ - On request 5 μ	
Scarico condensa Condense drain	Standard semi-automatic Standard semi-automatic	
Materiali Materials	Corpo e protezione tazza / Body and cup protection Gruppo regolazione / Regulation group Scarico condensa / Condense drain Elemento filtrante / Filtering element Membrana / Membrane Tazze e visualizzatore / Cups and oil-sight Molle / Springs	Alluminio verniciato / Painted aluminium Materiale plastico / Plastic Ottone nichelato / Nickel plated brass Bronzo sinterizzato / Sintered bronze NBR Policarbonato / Polycarbonat Acciaio armonico / Spring steel

Silenziatori - Silencers

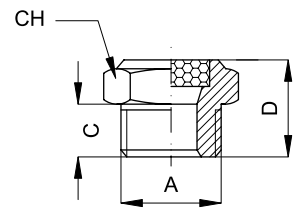
Nipplo: Ottone

Parte filtrante: Bronzo sferico sinterizzato 100 µm

Nipple: Brass

Filter: Spherical sintered bronze 100 µm


Codice / Code	Articolo / Article	A	CH	C	D
10048	S0714	1/4"	16	8	17



Regolatori silenziosi - Silenced regulators

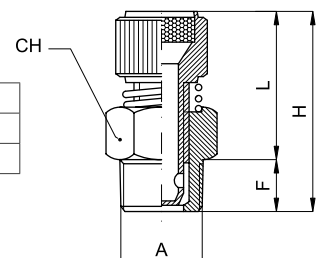
Nipplo: Ottone

Parte filtrante: Bronzo sferico sinterizzato 80 µm

Nipple: Brass

Filter: Spherical sintered bronze 80 µm


Codice / Code	Articolo / Article	A	CH	F	L		H	
					min	max	min	max
20002	R0114	1/4"	15	8	22	24	30	32

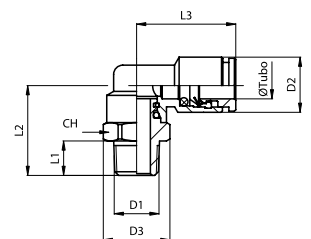


Gomito conico girevole - BSPT swivel elbow

Materiale: Ottone nichelato

Material: Nickel-plated brass


Codice / Code	Articolo / Article	Ø Tubo / Tube	D1	D2	D3	CH	L1	L2	L3
73117	RR 11 06 14	6	1/4"	12	15,5	14	11	23	21,5
73119	RR 11 08 14	8	1/4"	14	15,5	14	11	23	22
73121	RR 11 10 14	10	1/4"	16	20	18	11	25,5	25

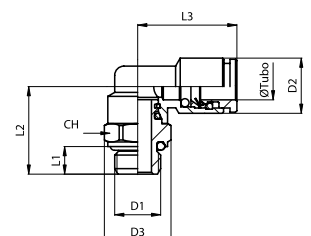


Gomito cilindrico girevole - BSP swivel elbow

Materiale: Ottone nichelato

Material: Nickel-plated brass


Codice / Code	Articolo / Article	Ø Tubo / Tube	D1	D2	D3	CH	L1	L2	L3
73135	RR 12 06 14	6	1/4"	12	16	13	6,5	22,5	21,5
73137	RR 12 08 14	8	1/4"	14	16	13	6,5	22,5	22
73139	RR 12 10 14	10	1/4"	16	16	16	6,5	22	25



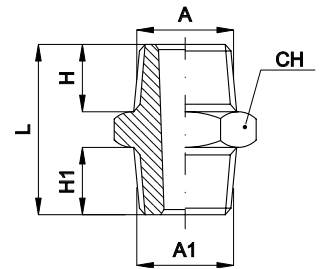
Nippli - Nipples

Materiale: Ottone nichelato

Material: Nickel-plated brass



Codice / Code	Articolo / Article	A	A1	CH	H	H1	L
70100	N21414	1/4"	1/4"	14	10	10	25
70102	N21412	1/4"	1/2"	22	10	12	28



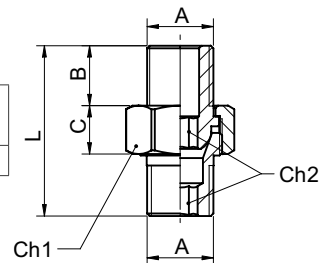
Nippli conici a 3 pezzi - BSPT nipple unions

Materiale: Ottone nichelato

Material: Nickel-plated brass



Codice / Code	Articolo / Article	A	A1	CH	H	H1	L
70252	N3P214	1/4"	12	19	6	9,5	33,5



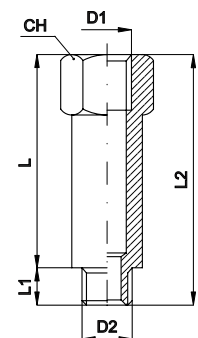
Prolunghe cilindriche maschio / femmina - Male / female BSP extension

Materiale: Ottone nichelato

Material: Nickel-plated brass



Codice / Code	Articolo / Article	D ₁	D ₂	CH	L	L ₁	L ₂
70060	PMF114L20	1/4"	1/4"	16	20	8	28
70061	PMF114L37	1/4"	1/4"	16	37	8	45
70063	PMF114L43	1/4"	1/4"	16	43	8	51



Gomiti maschio / maschio - Male / male elbow

Materiale: Ottone nichelato

Material: Nickel-plated brass



Codice/Code	Articolo / Article	D ₁	D ₂	CH	L ₁
70190	LMM14	1/4"	1/4"	13	22

